

## Wi-Fi Temperature & Humidity Sensor



\* Please read this manual carefully before use and keep it for future reference.

## Product parameter:

Size:	72*25*20mm
Input voltage:	DC3V LR03*2
Quiescent current:	≤6uA
Low power undervoltage:	≤2.4V
WiFi:	802.11b/g/n 2.4GHz
Working temperature:	-10 C ~+60 C
Working humidity:	0%~99%RH

1

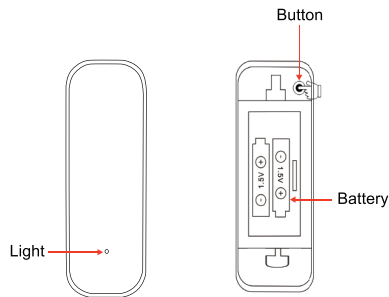
## How to set up:

1. First scan QR code with your smartphone, or search "Smart Life" app in Google Play Store or APP Store to download and install app
2. Register the app with email address.



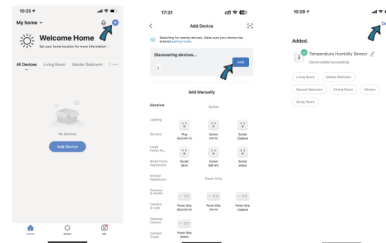
2

## Appearance introduction:



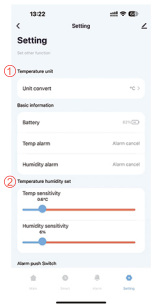
3

1. Bluetooth mode: First turn on the bluetooth immobile phone - open smart life app and choose "+" Press the button for 5 seconds, and the light will flash, Then will see "Discovering devices" on mobile app. Finally press "Add", it will connect the Wi-Fi network automatically



4

2. After connect WiFi successfully, click the sensor icon to enter the app interface and do some setting.



① Temperature unit switching

② Temperature/humidity sensitivity: Sensor temperature/ humidity value will synchronization to app when upper/ lower preset temperature/ humidity value. For example, now the temperature is 28°C and humidity is 70%, the temperature/ humidity sensitivity is ±0.6/ 6%, then the sensor temperature/ humidity value will synchronization to app when temperature / humidity is 28.6°C or 27.4°C/ 76% or 64%. (Factory default: temperature sensitivity is 0.6°C, humidity sensitivity is 6%)

5

3. Alarm Management

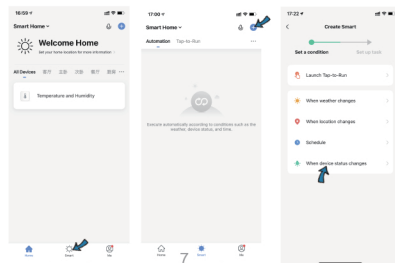
1. Temperature/humidity upper and lower limits are set: The setting of the temperature/humidity range.



6

4. Intelligent Linkage

When the ambient environment change, you can do intelligent linkage. For example, the air conditioner will be on automatically when the room temperature surpass 35 C. And the humidifier will spray when the humidity is lower than 20% RH.



7

5. Share devices

You can share your added devices with your family members, so they can also monitor the ambient environment.

6. Temperature Unit Selection in APP  
You can choose °C or °F as the temperature unit through app.

7. Third-party Voice Control  
Works with amazon alexa, google assistant.

8